

When Disaster Strikes: Responding to Emergencies at a Small Museum

ONTARIO MUSEUM ASSOCIATION

MARCH 20, 2024

MELISSA COLE, CURATOR AND JENNIFER WEYMARK, ARCHIVIST

OSHAWA MUSEUM



— Home to our History —

About the Oshawa Museum



Which painting in the National Gallery
would I save if there was a fire?
The one nearest the door of course.

-George Bernard Shaw

Guy House





Archival items transferred to Henry House,
December 17, 2003.



Putting the Plan into Action

- Gaps in plan were brought to light at this time
- Need to strengthen relationship with the City was also highlighted
- Determine what needs to be saved if a crisis occurs





Walter Passarella/ This We

Volunteers and employees of Guy House at the Oshawa Community Museum in Lakeview Park console each other Thursday morning after the historic building was gutted by fire. Police are investigating the cause. For more reaction, see pages 5 and 9.

Arson suspected in Oshawa fires

Response 1 – Address Gaps In Plan

Oshawa Historical Society
Oshawa Museum

Disaster & Preparedness
Manual 2023



Response 2 – Relationship with Stakeholders

Oshawa Historical Society
Oshawa Museum

Disaster & Preparedness
Manual 2023





True Care Restoration or CRCS		After hours service for emergencies – broken windows that invite intrusion. Also floods, clean ups
City Hall		<p>Call this number for all City services including parks and animal control.</p> <ol style="list-style-type: none"> 1. City Staff member and number: Facilities, deals with emergencies with the buildings 2. City Staff member – Risk management and insurance for buildings only 3. City Staff Member – alarms 4. City Staff member – corporate security
Fire Monitoring of Canada		Fire system monitoring
Fayer Construction		
Troy Fire & Life Systems		Fire alarm inspection and repair
Coulter Waste Disposal		Call for emergencies with septic holding tank. For example water gushing out of pipe located outside north archives window.
Upper Canada Fuels		Oil delivery
Roughley Insurance		Insurance issues related to collection, liability – not houses
Lloyd Pest Control		
Prairie Plumbing		
Corporate Security		City Hall security available 24 hrs a day. Call to report problems with alarms and to arrange additional patrols if needed
Corporate Security – Staff Name		's direct line

Response 3 – What To Save

Oshawa Historical Society
Oshawa Museum

Disaster & Preparedness
Manual 2023

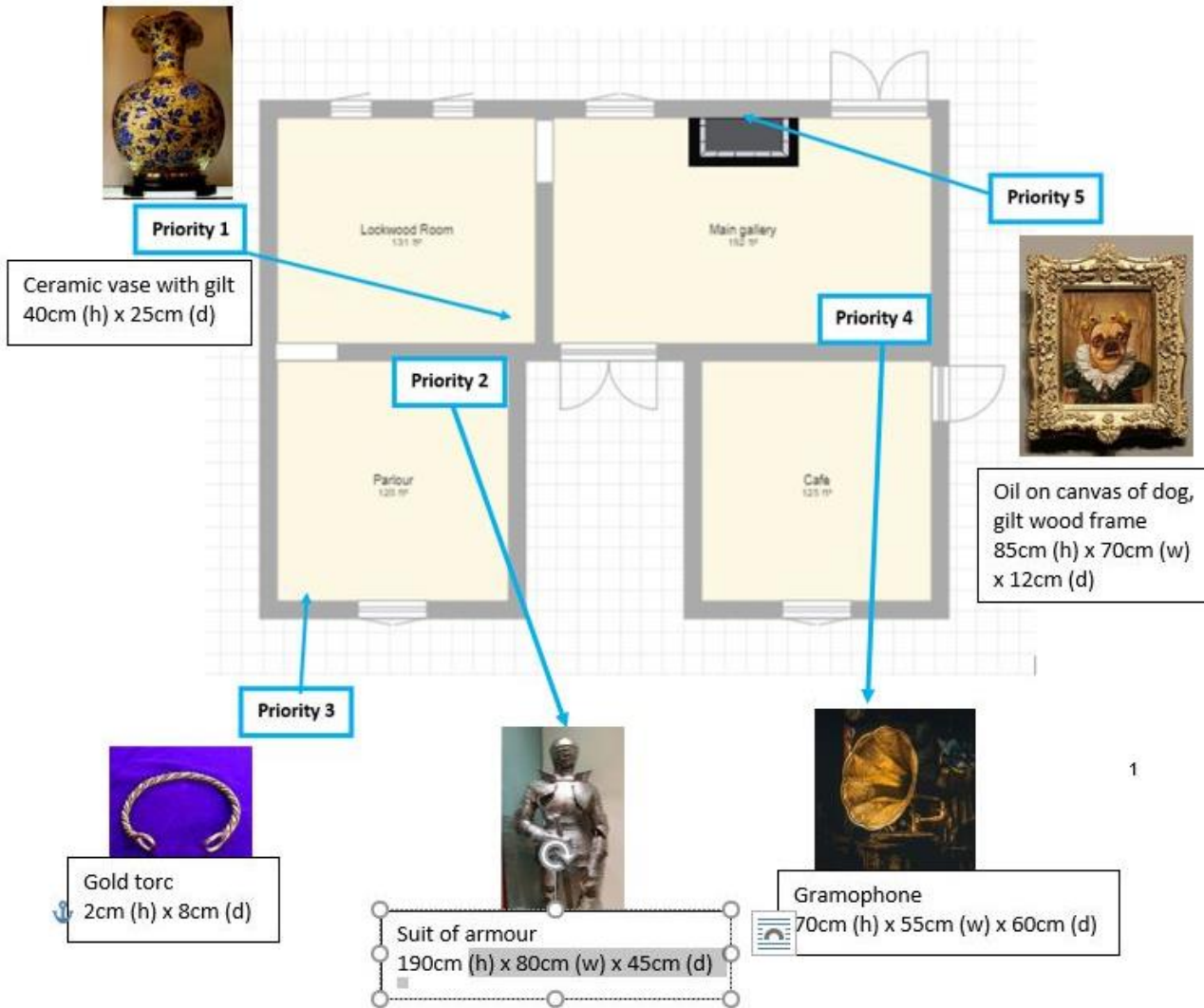
<p>Kitchen</p> <ul style="list-style-type: none"> ▪ Nanny Bench (North Wall) <p>Bedroom</p> <ul style="list-style-type: none"> ▪ Lurenda's items on the top of the dresser (handkerchief, brooch, neckerchief) ▪ John's McGill's Vest – (inside dresser) ▪ Jenny's wedding sleeves (inside dresser) <p>Clothing and Textiles are in the attic. There are funerary artifacts in the basement.</p>	
--------------------------------------------------------------------------------------------------------------------------------------------------------------------------------------------------------------------------------------------------------------------------------------------------------------------------------------------------------------------------------------------------------------------------------------------------	--

Archives Storage Room	Archives Reading Room/Office
Gray boxes – priority given to boxes marked with glow-in-the-dark stickers	Gray newspaper boxes - priority given to boxes marked with glow-in-the-dark stickers
Large gray boxes - priority given to boxes marked with glow-in-the-dark stickers	Gray oversized boxes - priority given to boxes marked with glow-in-the-dark stickers
White boxes – priority given to boxes marked with glow-in-the-dark stickers	City Directories – located in the short grey cabinet on the south side under the clock
Overhead cabinets – priority given to boxes marked with glow-in-the-dark stickers	

Prioritization of Collection Damage

Artifacts are classed according to levels to determine damage and prioritize cleaning:

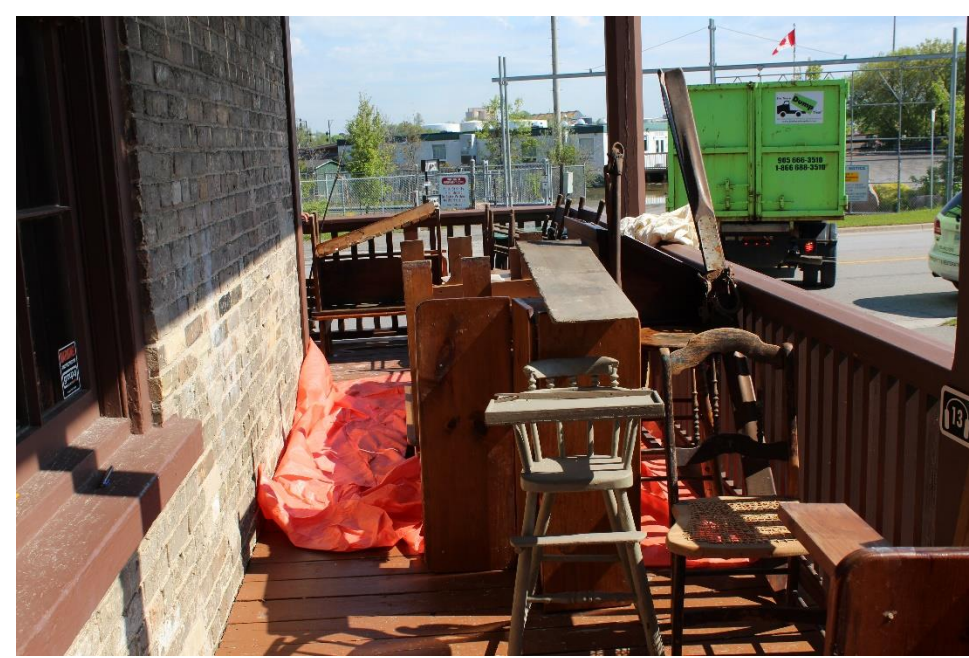
- Level 1** – Heaviness of Soot. Artifact may need to be cleaned but little else.
- Level 2** – Artifact is scorched, but not burnt. May require cleaning although brittleness may be an issue in handling and cleaning.
- Level 3** – Artifact is burnt and little can be done to conserve the artifact.



Robinson House







Templates

<https://collectionstrust.org.uk/resource/building-an-emergency-plan-a-guide-for-museums-and-other-cultural-institutions/>

<https://www.museums.ab.ca/what-we-do/emergency-preparedness.aspx>

Attend a workshop offered by CCI:

CCI WORKSHOP: EMERGENCY AND DISASTER PREPAREDNESS FOR CULTURAL INSTITUTIONS

Wednesday, February 24 – Thursday, February 25, 2016
The Robert McLaughlin Gallery, 72 Queen Street, Civic Centre, Oshawa, ON L1H 3Z3

Presented by Ontario Association of Art Galleries in partnership with Ontario Museum Association and Canadian Conservation Institute

Description

The Ontario Association of Art Galleries and the Ontario Museum Association present Emergency Preparedness for Cultural Institutions, a Canadian Conservation Institute Workshop. This workshop discusses the importance of preparing for emergencies, shows how to form and train an emergency response team, provides guidance in creating an effective emergency plan, and offers training in the salvage of water-damaged collections. The workshop is highly interactive and includes lectures, demonstrations, discussions, group exercises and hands-on activities.

