

# EMERGENCY PLANNING

---

TIMMINS MUSEUM EXPERIENCE

# CONTEXT: CHALLENGES FOR NORTHERN AND RURAL MUSEUMS

---



## GEOGRAPHY

---

- Remote
- Hard to reach areas
- Transportation issues
- Broad band issues



## RESOURCES

---

- People
- Supplies/suppliers
- Support



## FACILITIES

---

- Where can we store things?
- Where do we work from?
- Who can help?



# OUR EXPERIENCE

---



# ISSUES WITH THE BUILDING IN 2007

---

Mold

Water damage/freezing



# MOVED STAFF AND COLLECTIONS

---

- Whitney Arena Hall



- Underground Gold Mine Tour





# OPENED NEW FACILITY IN 2012

---



# NEW BUILDING, NEW CHALLENGES

Shared facility with Timmins  
Economic Development  
Corporation, Northern College  
Downtown Campus, IT Department



# AS A DEPARTMENT OF THE MUNICIPALITY, WE FALL UNDER MUNICIPAL EMERGENCY RESPONSE POLICY

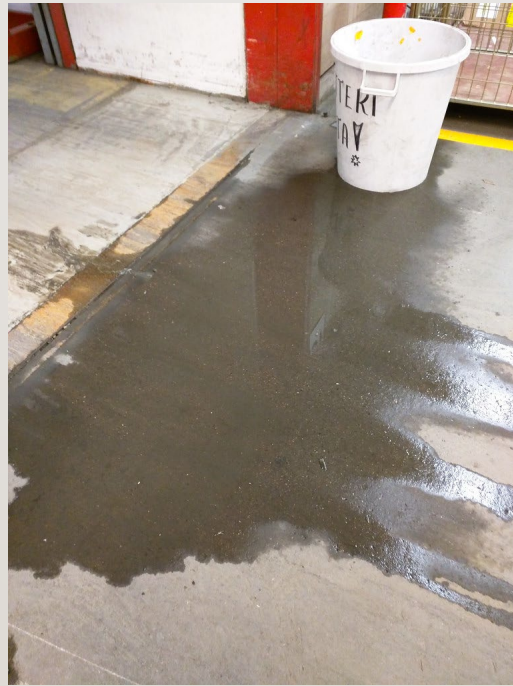
---

- While the main plan is the same for all departments, each department must create their own plan that is site specific
- The main plan includes procedures (SOPs) related to evacuation, fire, earthquake, extended power outage, tornado, lightning strikes, chemical spill(in the community), hazardous materials accident on highway, carbon monoxide exposure, natural gas leaks, pandemic, bomb threat, suspicious parcels, aggressive behavior, hostage taking, theft, robbery.

# MUSEUM EMERGENCY PLAN – WHAT WE WORRY ABOUT SPECIFICALLY

---

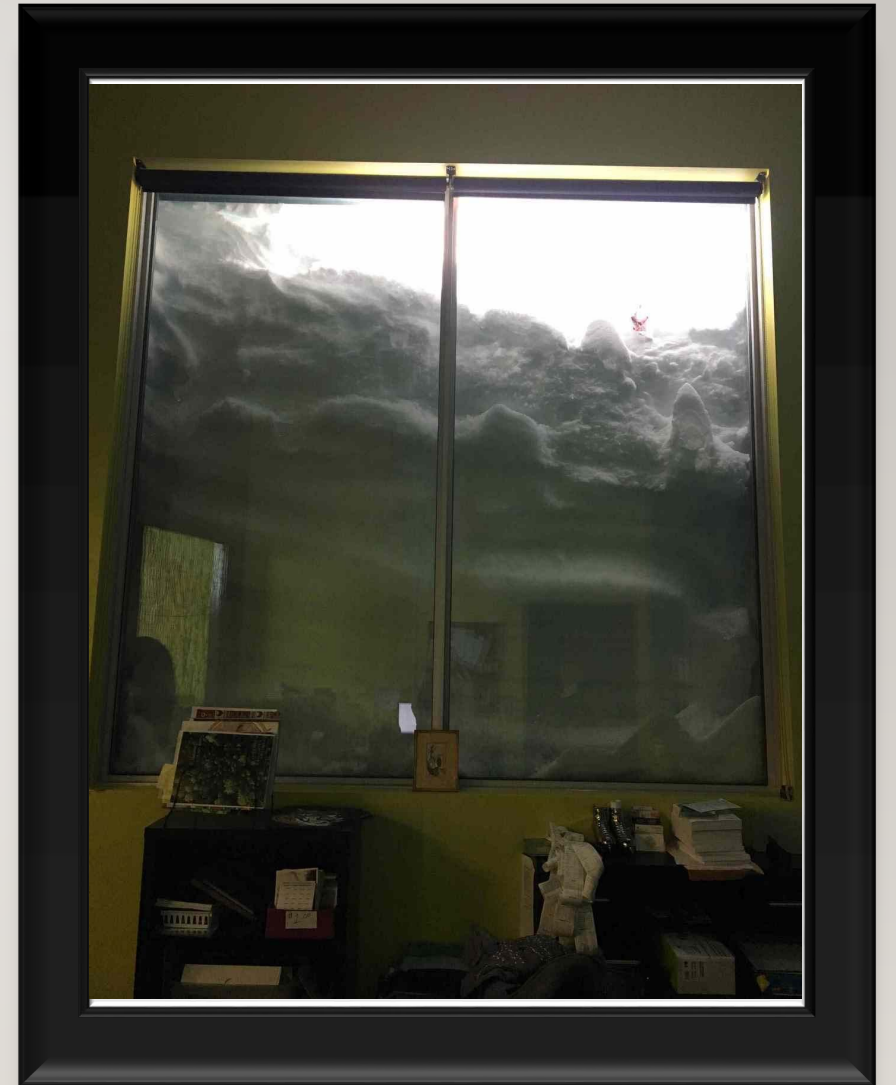
- Water leaks – especially since we have a flat roof!



# WEATHER ISSUES

---

Winter snow storms, wind storm, severe rain storm



# FIRE – ONSITE AND WILDFIRES

---

- Forest Fire in 2010 surrounded the community – all roads closed – so, it was a big deal



# OTHER SITE SPECIFIC PROCEDURES

---

- Missing child
- Pest infestation
- Accidental damage



## TRAINING

---

- In order for the plan to work, people need to be trained on how to use it!
- Review the plan regularly with staff; make sure contacts are up to date; share the plan with authorities





# PITHY QUOTE OF THE DAY

---

- “If you fail to plan, you are planning to fail” – *Benjamin Franklin*

